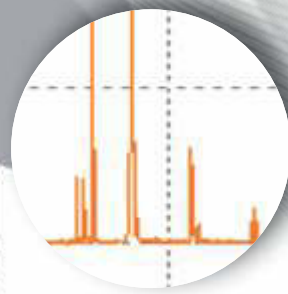


SOL
instruments



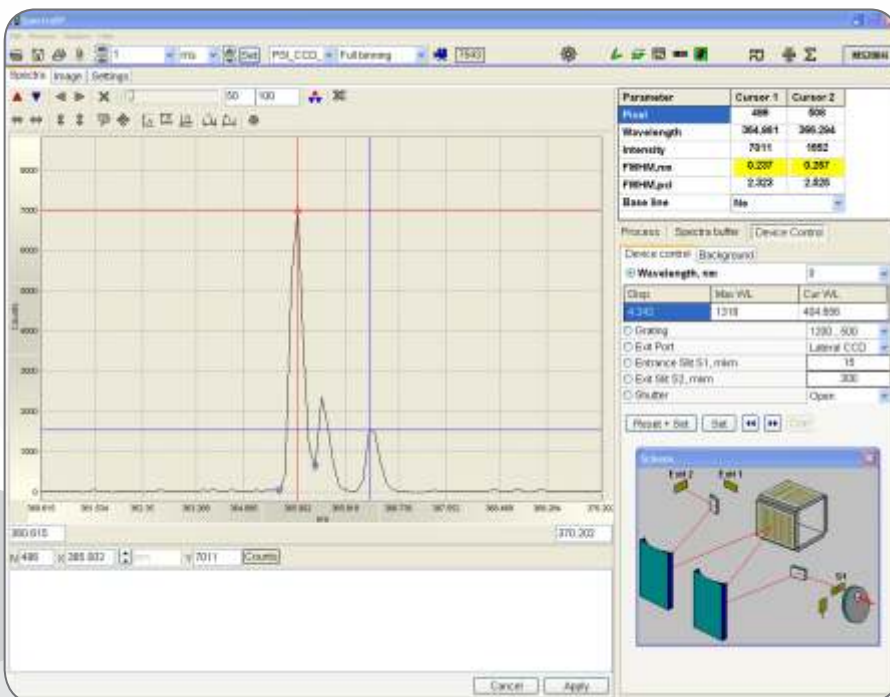
SpectraSP
Software

SpectraSP software is an intuitively usable software package that gives you full control of all SOL instruments spectral devices. The program package provides for maximum comfort and flexibility during the operation.

Features and Benefits of SpectraSP:

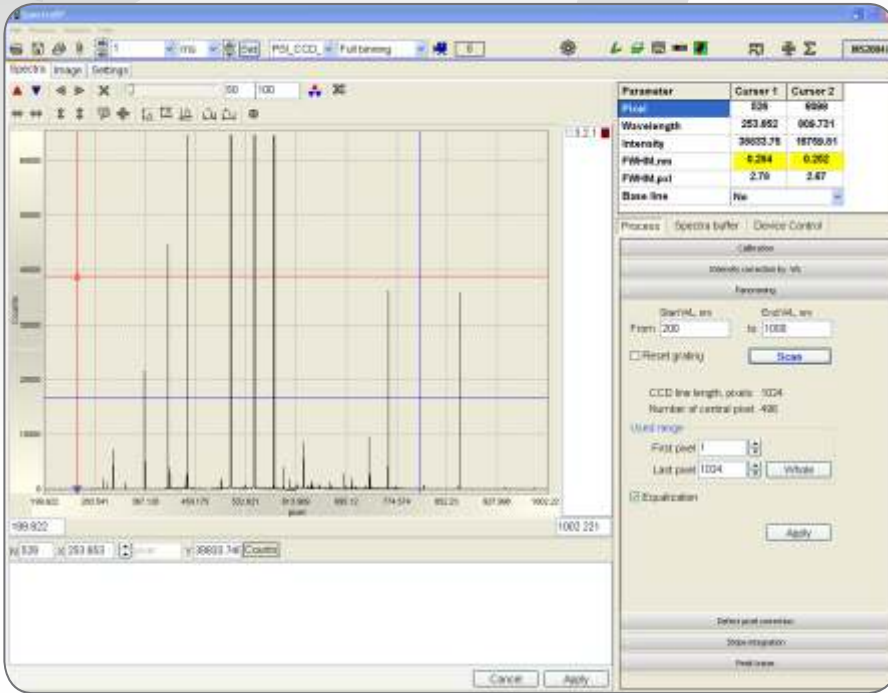
- All SOL instruments® spectral devices control
- Support of wide variety of detectors (single and multi-element) from different producers (SOL instruments, Proscan, Andor, Ormins)
- Simultaneous use of multiple detectors
- Different types of spectral measurements using various CCD operation modes (spectral, image, multi-track)
- Experiment automation
- Data processing and analysis
- Accurate wavelength calibration
- Panoramic spectrum in a predetermined spectral range
- Background correction, intensity normalization, defect pixel correction
- Real time measurement of spectral peak parameters (intensity, position, width)
- The signal integration in a spectral band and all other mathematical operations
- Converting spectra into different formats, data saving
- Printing of experimental results using a built-in Print Editor

USER-FRIENDLY INTERFACE



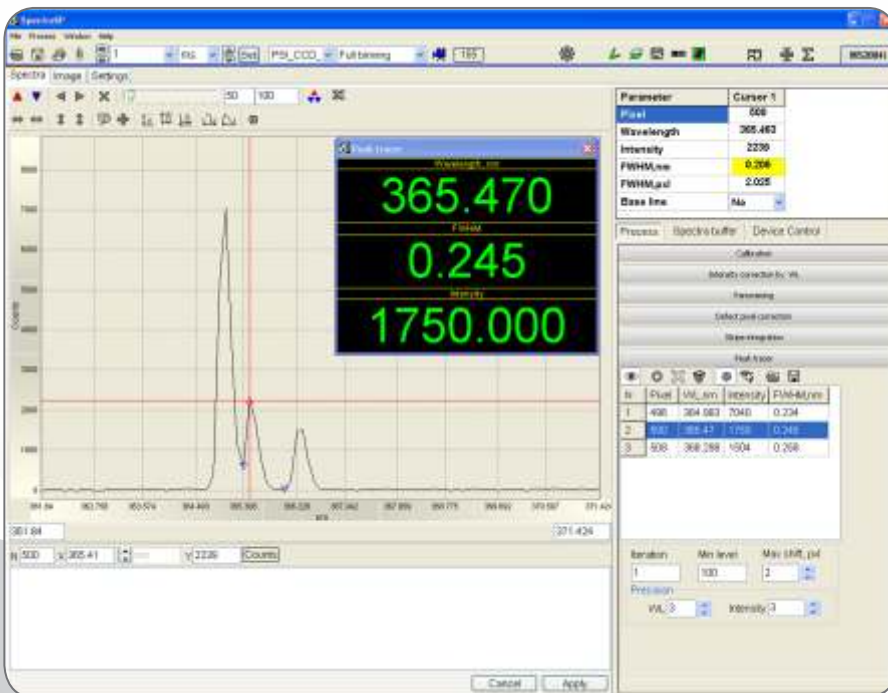
- Individual program windows to operate with spectra and images
- Individual control panels for operation with built-in functions
- Quick access to the frequently used parameters
- Pop-up help

PANORAMIC SPECTRA ACQUISITION



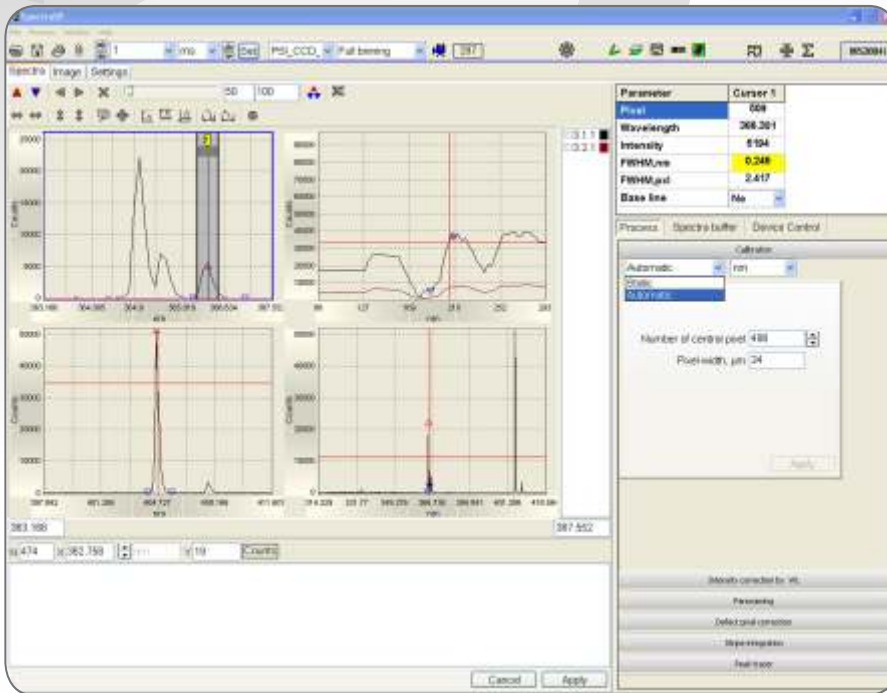
- Acquisition of panoramic spectra in a given spectral range is carried out quickly and easily
- A unique algorithm provides accurate wavelength and field calibrations, stitching of spectra

PEAK TRACER



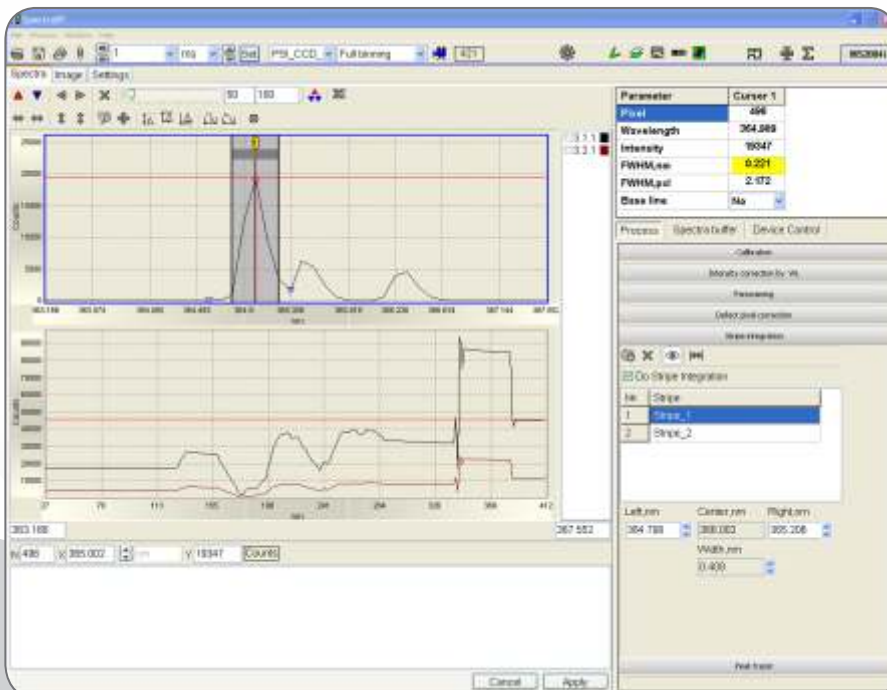
- Peak Tracer is intended for measurement of the basic peak parameters (peak position, its intensity and width)

ADVANCED PROCESSING OF SPECTRA DATA



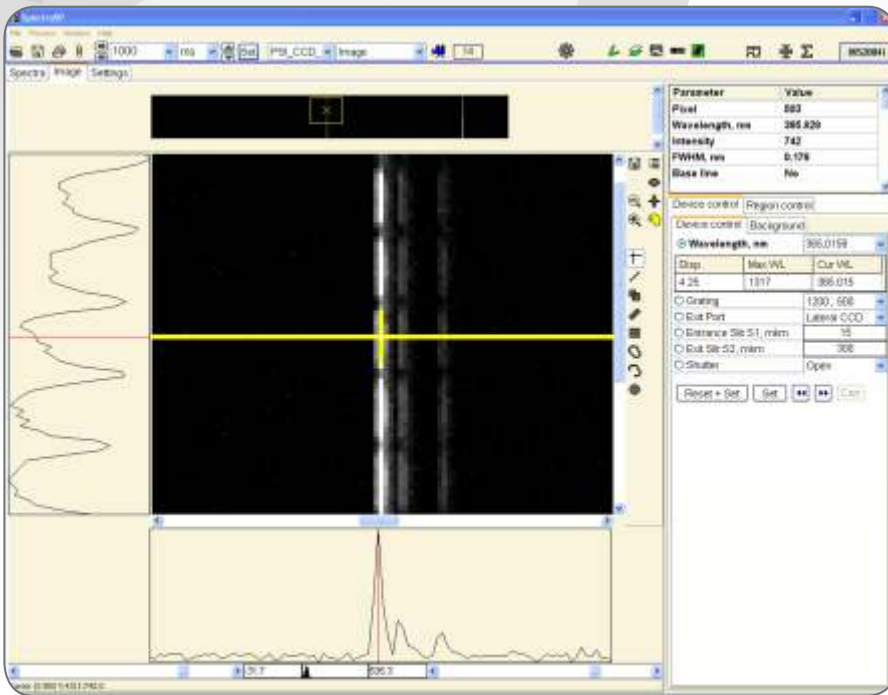
- Spectra visualization in convenient forms
- Various styles and color for data presentation
- Spectra comparison function (display of many spectra in a single graph)

SIGNAL INTEGRATION



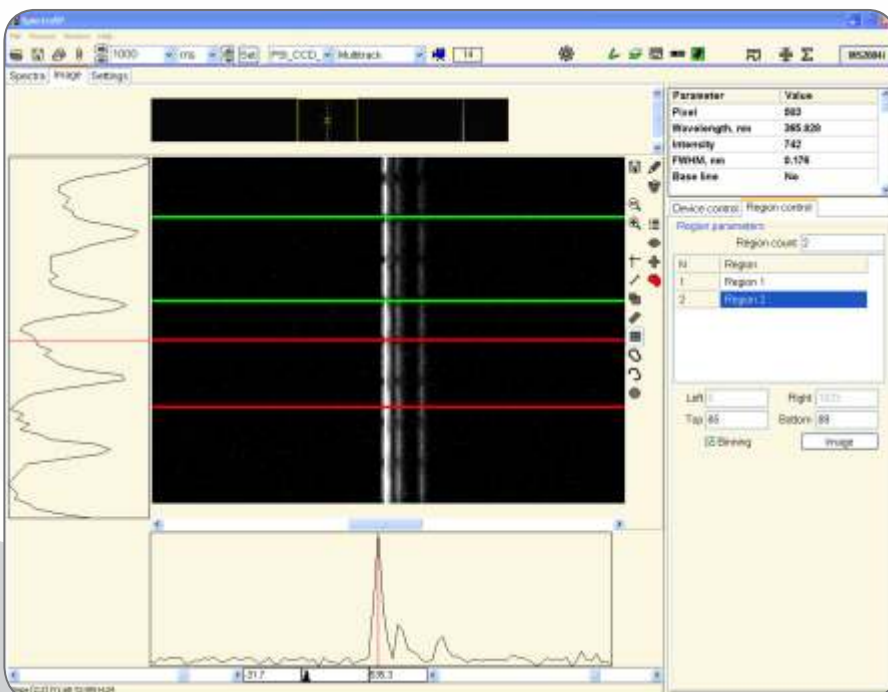
- This function can be applied to a signal intensity control in a selected spectral band
- Up to 4 spectral bands selection with real-time parameters adjustment

IMAGES AND SPECTRA



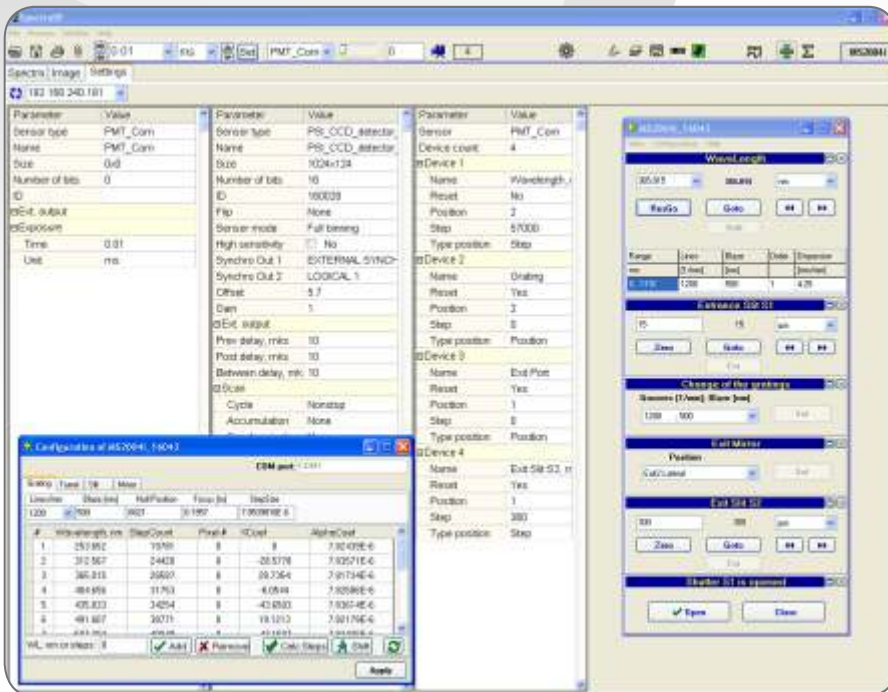
- All spectra in the rows of array sensor are recorded
- Additional tools for images and spectra operation:
 - Scaling of a required image area
 - View of any cross sections (vertical and horizontal)
 - Brightness and contrast adjustment of images

DETECTION MODES



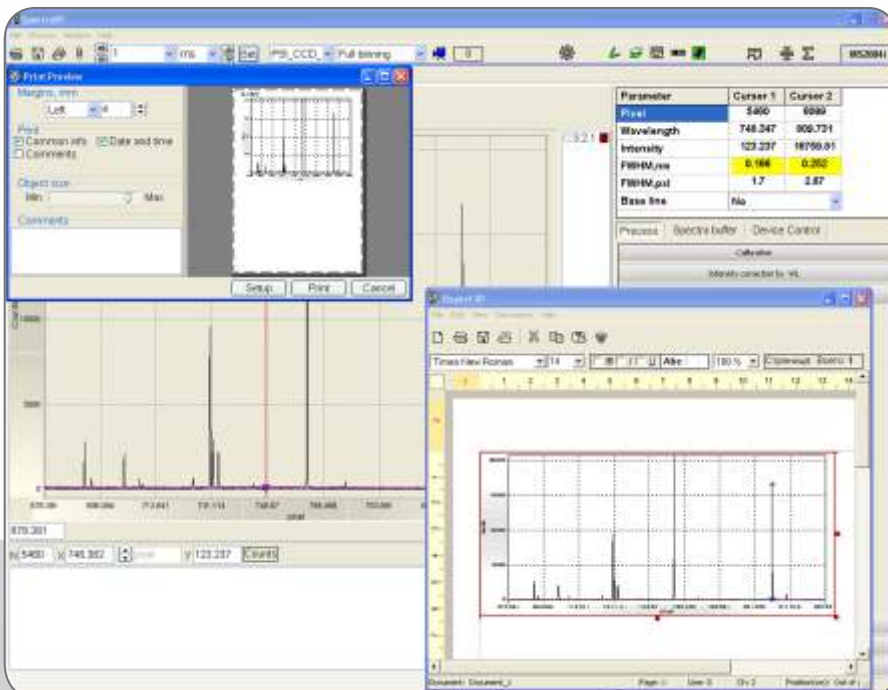
- Full Vertical Binning (FVB). The charges from each column of CCD pixels are combined or binned on the chip to give a single spectrum per column
- Image (signal information of each individual pixel of CCD is recorded and accessible)
- Multi-track (spectra will be read out from the defined CCD tracks)

EXTENDED CONTROL OF SPECTRAL INSTRUMENTS AND DETECTOR PARAMETERS



- Setting of all possible registration parameters on a separate program page
- Signal averaging and summation
- External and internal synchronization

REPORTS, SPECTRA SAVING, DATA EXPORT



- Saving of spectra in different formats for further processing
- Built-in report editor

SpectraSP is always on development.

You can follow up regular updates on our web-page www.solinstruments.com



SOL instruments Ltd.
tel.: +375 17 290 07 17
sales@solinstruments.com
Minsk, Belarus